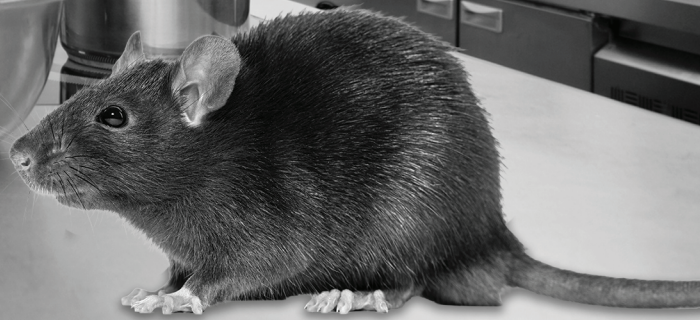


**PIONEERING SUSTAINABLE  
PEST SOLUTIONS**

## Rodent Management Program Update – Commercial Clients



Due to recent legislative changes introduced by the Australian Pesticides and Veterinary Medicines Authority, rodent management programs across Australia are being updated to meet stricter compliance requirements, particularly around the use of second-generation rodenticides.

At Laguna Pest Control, we've adapted our program to not only meet these requirements, but to deliver stronger protection, improved audit outcomes, and more effective long-term control for your business.

### What This Means for Your Business

If your site currently operates on a bi-monthly, quarterly, or annual service schedule, there is an important change

Where second-generation rodenticides are used, bait stations must now be inspected at intervals not exceeding 35 days.

This means less frequent service schedules are no longer compliant when these products are in place.

### Our Structured Approach

To ensure the best outcome for your business, we implement a two-phase rodent management program

#### Phase 1 – Active Control (Compliance + Rapid Results)

Where rodent activity is identified, or risk is high

- We utilise high-performance second-generation baits for rapid population reduction
- Services are conducted every 4 weeks in line with legislation
- Activity levels are monitored, recorded, and adjusted as required

#### Result:

- Fast control of active infestations
- Full legislative compliance
- Strong documentation for audits and inspections



# Laguna

## PEST CONTROL



### PIONEERING SUSTAINABLE PEST SOLUTIONS

#### Phase 2 – Maintenance & Risk Management

Once the activity is reduced to a satisfactory level

- Higher-toxicity baits are removed
- We transition to lower-toxicity, multi-feed baiting systems
- Service frequency is tailored based on your site's risk profile

This may include

- Monthly (high-risk environments)
- Bi-monthly or quarterly (lower-risk, well-managed sites)

Ongoing focus includes

- Site hygiene and waste management practices
- Entry point prevention (proofing)
- Identification and correction of conducive conditions (factors that attract or support rodent activity)

#### Result:

- Sustainable, long-term control
- Reduced environmental and off-target risk
- Flexibility in service frequency without compromising compliance

#### Why This Is the Best Outcome for Your Business

- This updated approach provides clear operational and compliance benefits
- Audit-ready compliance (critical for food, hospitality, and regulated industries)
- Reduced business risk associated with non-compliance
- Improved pest control outcomes through active monitoring
- Lower long-term reliance on high-toxicity products
- Detailed reporting and trend tracking for due diligence

#### What to Expect Moving Forward

- Sites with active rodent pressure will require monthly servicing initially
- Once stabilised, we will step down to a tailored maintenance schedule
- Sites currently on less frequent programs may require an increase in service frequency during the control phase

#### Our Commitment

We don't take a "set and forget" approach.

Our focus is to deliver:

- Consistent, reliable results
- Full compliance with current legislation
- Practical, site-specific recommendations that protect your business

#### In Simple Terms

We use stronger treatments to quickly bring rodent activity under control – then transition to safer, long-term solutions, with service levels tailored to your business once the risk is reduced.

**New rodent laws are here – make sure your pest company is too.**

**Don't risk it – Choose a company that follows the new legislation. Compliance isn't optional – it's the standard. No exceptions.**



5449 1765 | admin@lagunapestcontrol.com.au

lagunapestcontrol.com.au | ABN 29 600 638 353 | QBCC 15440231